



---

# Y6 Rollover Information Evening



Thursday 27th June 2024  
4 - 5 pm

---



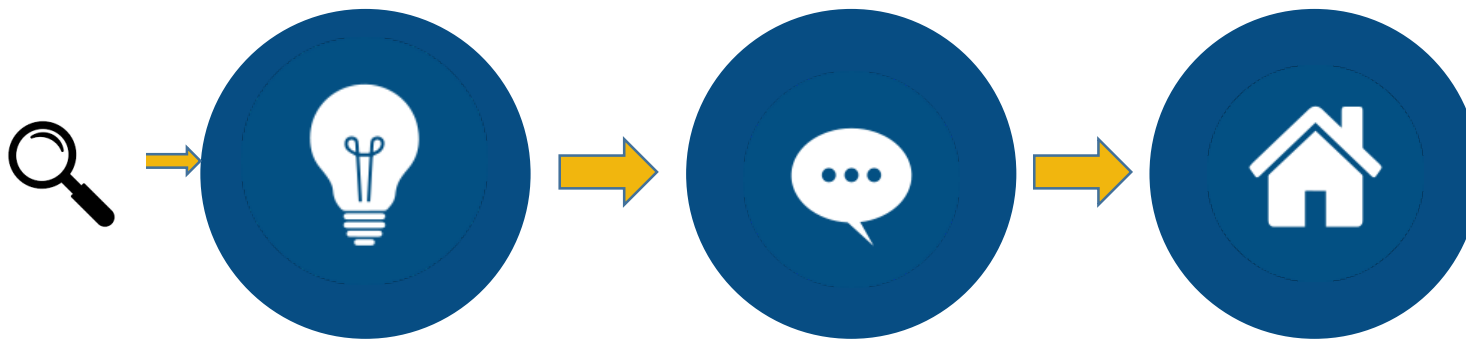


---

# Rollover Information Evening

Currently, Y6's are engaging in an induction with their Rollover tutor:

We hope that by this point, Y6's are starting to feel confident in their transition to RCS:



## Introduction

An Introduction to RCS  
28th September

## 'Explore the Curriculum' Events

Core (Murder Mystery Night) 24th April

Non-Core Subject Taster sessions 16th May

## Rollover Information Evening

27th June 2024

During this event, we invite students to meet their Rollover Form Tutor and their new classmates:

## Rollover 2024

1st July 2024

We look forward to welcoming all our new intake to begin their three week induction into Y7:

---



# Information on our website



- Home
- Our School ▾
- Parents ▾**
- Students ▾
- Curriculum ▾
- Facilities Hire ▾
- News
- Contact Us
- 🔍 ▾

## INFORMATION ON

- Term Dates
- Covid-19 Information
- Staff
- Admissions
- The School Day
- Year 6 Transition**
- RCS Tube
- Free School Meals
- Chromebooks for Students
- Box Office - Positickets

## YOUR CHILD

- Uniform
- Attendance & Punctuality
- Targeted Tutor Period
- SEND Information

## HELP AND SUPPORT

- Supporting Your Child
- Remote Education Guide
- Parent Pay
- MCAS App
- Aware
- Arran Hill Centre

## LETTERS

- Letters / Newsletters



## Our Mission

- We aim to send every young person into the wider world both able and qualified to play their full part in it
- We want all students to be equipped, not only with qualifications...
- but also with the skills and personal attributes to deal with the challenges of life
- Above all else we want all our students to be happy and successful

# The Rawmarsh Way

We say and do things in a certain way at Rawmarsh, referred to as 'The Rawmarsh Way.'

The Rawmarsh Way allows us all to promote the skills and attributes you need in order to develop independence, responsibility and resilience to have a happy and successful life. It defines who we are and what we stand for at Rawmarsh Community School.

## The Rawmarsh Way:

1. We believe in ourselves
2. We take responsibility for our choices and actions
3. We take risks and rise to a challenge
4. We dream big
5. We work hard and never give less than our best
6. We support others around us
7. We take pride in our school community
8. We are prepared to make mistakes and learn from them
9. We are equipped to learn
10. We are respectful and we listen to others
11. We take pride in our appearance
12. We are proud of our achievements



WE BELIEVE IN OURSELVES

we take  
responsibility  
for our choices & actions

WE TAKE RISKS & RISE TO A CHALLENGE

WE DREAM BIG

WE WORK HARD  
& NEVER GIVE LESS THAN OUR BEST



THE RAWMARSH WAY

WE ARE PROUD OF OUR ACHIEVEMENTS

WE SUPPORT OTHERS AROUND US

WE ARE RESPECTFUL & WE LISTEN TO OTHERS

WE TAKE PRIDE IN OUR APPEARANCE

We are prepared to make mistakes & Learn from them

WE TAKE PRIDE IN & LOOK AFTER OUR SCHOOL COMMUNITY

WE ARE EQUIPPED TO LEARN

## KS3 PLEDGES

## BRONZE

## SILVER

## GOLD

ACTIVE  
CITIZENSHIP

Volunteering

Volunteer to take a lead role supporting your teacher in the classroom.

Benefit your local community by carrying out an act of kindness.

Regularly volunteer

Charity

Take part in a school fundraising event such as the sponsored walk.

Take part in a charity event in the community.

Organise a fundraising event for charity.

Appreciating Diversity

Participate in a religious encounter activity.

Participate in an inclusive sport.

Take an active part in an Equality Month activity.

Democracy

Take part in a Form discussion about a current event.

Take a Student Leadership role within school.

Talk or write to your local MP or Councillor about an issue that you are interested in.

LIFE  
SKILLS

Careers &amp; Aspirations

Research a career you have an interest in.

Complete a visit or an interaction with a local employer.

Interview a person from your chosen career.

Communication

Take part in a team building activity.

Present to your Form or Year Group about a subject or topic that interests you.

Pitch a campaign for change in school to a key adult.

Wellbeing

Complete a mindfulness exercise.

Keep a sleep, exercise or healthy eating diary and analyse your choices.

Take up a new activity which helps your wellbeing.

Independence

Undertake First Aid training.

Create three different types of revision resources for an upcoming assessment.

Show independence in the wider world, for example, book your own doctor's appointment or organise your own bus pass.

CULTURAL  
EXPERIENCES

Extra-curricular

Regularly take part in an extra-curricular activity in school or in the community.

Take part in an extra-curricular activity outside of school.

Take a lead role in an extra-curricular activity.

Reading

Keep a reading diary or log for a term including a comment on each book you have read.

Write a report on a book you have read.

Take part in peer reading within school.

Out of School

Participate in a school visit or trip.

Visit a museum, heritage site or place of interest.

Visit a different city and reflect on your experience.

Understanding your Roots

Research your local area and find out five interesting facts that you didn't already know.

Research a faith or culture different to your own and present this to your form or class.

Research your family history or the history of your school.

KS3 PLEDGES

BRONZE

SILVER

GOLD

ACTIVE

Volunteering

Volunteer to take a lead role supporting your teacher in the classroom

Benefit your local community by carrying out an act of kindness

Regularly volunteer

LIFE SKILLS



Careers and Aspirations

Communication

Wellbeing

Independence

Research a career you have an interest in



Take part in a team building activity



Complete a mindfulness exercise



Undertake First Aid training



Reading

Out of School

Understanding your Roots

Including a comment on each book you have read

Participate in a school visit or trip

Research your local area and find out five interesting facts that you didn't already know

Write a report on a book you have read

Visit a museum, heritage site or place of interest

Research a faith or culture different to your own and present this to your form or class

Take part in peer reading within school

Visit a different city and reflect on your experience

Research your family history or the history of your school



---

# Uniform and Equipment

## Daily Expectations

We expect all students to come in full and correct uniform every day.

We also expect all students to bring with them, every day, the following items:

- A bag large enough to carry an A4 book
- Their school planner
- Equipment for the day - as a minimum, 2x pens, 1x pencil, 1x rubber and 1x ruler in a pencil case
- Homework
- PE Kit (on PE days)





## Uniform Policy Shoes



### Acceptable Shoes ✓

- Plain black leather shoes, or
- Plain black leather trainers



### ✗ Unacceptable Shoes

- Any colour other than black
- Pumps, sliders, slip-ons, Crocs
- Materials other than leather or faux-leather

We aim to send all young people into an ever-changing world, able and qualified to play their full part in it.



See our website for full details of our uniform policy:



## Uniform Policy Shorts



### Acceptable Shorts ✓

- Plain black tailored shorts

Shorts must be knee-length and worn with black socks and usual school shoes.



### ✗ Unacceptable Shorts

- Shorter than knee-length
- Colours other than black
- Logos
- Denim, Polyester, Nylon, Jersey, Cycling, Running, Cargo or Board Shorts

We aim to send all young people into an ever-changing world, able and qualified to play their full part in it.





## Uniform Policy Skirts



### Acceptable Skirts ✓

- Plain black knee-length skirt

Skirts must be knee-length and worn with black tights or socks and usual school shoes.



### Unacceptable Skirts ✗

- Shorter than knee-length
- Colours other than black
- Lycra 'tube' style
- Pencil style (if skin tight)
- Tight fitting

We aim to send all young people into an ever-changing world, able and qualified to play their full part in it.



## Uniform Policy Trousers



### Acceptable Trousers ✓

- Plain black tailored trousers
- Standard fit
- Slim fit



### Unacceptable Trousers ✗

- Colours other than black
- Logos
- Leggings / Jeggings
- Denim / Jeans
- Skinny fit

We aim to send all young people into an ever-changing world, able and qualified to play their full part in it.



See our website for full details of our uniform policy:

# Uniform Policy Makeup & Jewellery



## Acceptable

- Minimal and discreet makeup
- Neutral colour nails
- One small stud earring per ear



## Unacceptable

- False eyelashes and false fingernails
- Bold makeup
- Facial or body piercings
- Rings, bracelets, larger earrings and necklaces

We aim to send all young people into an ever-changing world, able and qualified to play their full part in it.

# PE Kit

- Black, white and yellow PE t-shirt with RCS logo
- Plain black hoodie or sweatshirt
- Plain black PE style shorts, or
- Plain black sports bottoms / leggings
- Trainers\*

\*No pumps, slip-ons, sliders or flip-flops etc)



# Uniform Policy from September 2024



# School Uniform

- Black 'v neck' jumper with white piping to neck line and RCS/WPT logos, or  
Black cardigan with white piping and RCS/WPT logos
- RCS clip-on tie
- White button-up shirt
- Plain black tailored trousers, or
- Plain black skirt\*, or
- Plain black tailored shorts\*
- Plain black leather shoes or plain black leather trainers

\*Skirts and shorts must be knee-length  
\*Skirts must not be the lycra 'tube' type and must be worn with black socks or tights  
\*Shorts must be worn with black socks

# Our School Day

---



Time	Activity
8:40 - 9:00	Tutor time
9:00 - 9:20	Directed reading
9:20 - 10:35	Period 1
10:35 - 11:50	Period 2
11:50 - 12:20	1st break
12:20 - 1:30	Period 3
1:30 - 2:00	2nd break
2:00 - 3:10	Period 4

---



# Pastoral system

## *How we support our students*

We have a large support network to enable a smooth transition to RCS:

Where can our students go to for support?

- Tutor
- Teachers
- KS3 Hub (C Block)
- KS3 Lead, Non-Teaching Head of Year, Non-Teaching Assistant Heads of Year
  - Curriculum support (caravan)

We also have an Attendance Team (next to reception) and safeguarding team (B Block) who are here to support our students.



# Behaviour & Expectations

We are all members of the school community and it is expected that everyone acts with consideration and courtesy for others at all times.

## Code of Conduct

All students are responsible for their own behaviour in and out of the classroom. They should, in each lesson, take personal responsibility for their actions and follow the necessary sanctions placed on them by staff.



## Student Classroom Conduct

- Attendance is crucial to academic achievement and students are expected to attend school every day.
- Punctuality is a direct example of a student who is on message and we expected all students to arrive to school and all lessons on time.
- Uniform is important in ensuring a calm and business like atmosphere in school and students are expected to attend school in full uniform without exception.
- Equipment ensures all students are ready to learn. We expect all students to arrive to lessons with the correct equipment: This is inclusive of PE kit, books and as a minimum a pen, pencil and ruler.
- All students are expected to line up calmly ready to enter lessons. This is to ensure a meaningful start to each lesson.
- Students must remove all outer clothing on entering the classroom and get out their equipment.
- All classroom teachers' instructions must be adhered to at the first time of asking.



# Inside

...every lesson

You follow the Subject Way.

You complete all activities and beyond.

You communicate confidently, politely, and respectfully.

You answer questions and listen to others.

You ask your teacher if you are unsure and ask other questions about your learning.

You act upon the feedback from your teacher.

You help others who are struggling.

# Rules

You attend school every day.

You arrive on time and are fully equipped.

You wear the correct uniform.

You treat others with kindness and respect.

You do as you are asked the first time.

You walk around school sensibly.

You put your litter in the bin.

You look after classrooms and equipment.

Your mobile phone must not be used on school site. If it is seen it will be confiscated.

# Outside

...every lesson

You follow the Rawmarsh Way.

You complete what you need to do before the next lesson, e.g., home learning, wider reading, and documentaries.

You know the topics you are studying, what you've studied before and what is coming next.

You know if you are on track for your target grades or statements.

You take part in activities that push your learning beyond the classroom.

You prepare and revise for your assessments and exams early.

...every lesson





# High Expectations and Conduct

WARN



MOVE



REMOVE



SAME DAY  
DETENTION



RESTORATIVE  
CONVERSATION

## RAWMARSH RULES



WE ARRIVE TO LESSONS ON TIME



WE WEAR CORRECT UNIFORM



WE ARRIVE TO LESSONS FULLY EQUIPPED



WE DO AS WE ARE ASKED FIRST TIME OF ASKING



WE DO NOT SHOUT OR SWEAR



WE DO NOT ARGUE



WE KEEP OUR PHONES IN OUR BAGS

WE DO NOT WEAR HEADPHONES



---

## Tutor time



Tutor groups will be updated for September so students will be with new people and have a new tutor.

Some tutor groups will focus on literacy.

Other tutor groups will follow the new catch up / 'extend your learning' plan.

*We aim to send all young people into an ever-changing world able and qualified to play their full part in it*

---



---

## Tutor time

When: x3 sessions in Tutor (20 mins)

What: The introduction of 'Independent Study Time' for students to complete centrally set work covering each of the core subjects on allocated days.

Day 1	Day 2	Day 3	Day 4	Day 5
English	Maths	Science	PD / Pastoral	Assembly

*We aim to send all young people into an ever-changing world able and qualified to play their full part in it*

---



---

# Tutor time



- On independent study mornings students will enter their form room and collect a Chromebook
- Chromebooks will be available in all Year 7 and Year 8 form rooms
- Students will follow the link on the intranet to their work
- For the 20 minutes of form time they will work independently on the tasks set - these are linked to the work set in lessons for that week
- This will help students to catch up, consolidate, or extend their learning

*We aim to send all young people into an ever-changing world able and qualified to play their full part in it*

---

# CHROMEBOOKS FOR STUDENTS



## Portal Login Details

[BUY NOW: Edde Parent Portal](#)

Code to access portal:  
RAW2-2

### Key Details

**Portal Opens:**

NOW OPEN

**Ordering Deadline:**

19th July 2024 (10pm)

**First Direct Debit is taken:**

1st September 2024

**Delivered and Distributed to Students:**

Mid-September

### Chromebook FAQs

— **What is a Chromebook?**

A Chromebook is a small notebook style computer, which operates with minimal software installed on the device. It is designed to use software and information from the internet to perform tasks, rather than have a lot of internal processing power and storage.



---

# Chromebooks

**Voluntary Participation:** The scheme is optional, with special provisions for those not participating to ensure no disadvantages.

## Benefits of Chromebooks:

- Quick startup.
- Resistant to viruses.
- More affordable than standard laptops.
- Long battery life, lasting a whole school day.
- We use Google for Education tools extensively, and they fully integrate.

**Parental Support Encouraged:** Parents are encouraged to support the initiative;

- Students can continue their work at home, ensuring that learning is not limited to school hours.
- Facilitates homework, research, and project work beyond the classroom.
- Encourages students to take care of their devices, promoting a sense of responsibility.
- Prepares students for future educational and professional environments where digital skills are essential.
- Allows seamless access to work in our new Tutor initiative
- In lessons that utilise Chromebooks, students can use their own device



---

# Chromebooks



## **If you buy a Chromebook through the school**

1. The school doesn't make a penny on the scheme.
  2. The Chromebook will be delivered in September
  3. Ordering deadline is 19th July
  4. Comes with.....
    - a. Accidental damage protection, 3 years (2 claims per year max, no excess)
    - b. Theft protection, 3 years.
    - c. Case
    - d. Safeguarding software that will filter internet access both at school and home.
  5. Payment options, over 36 Months, 24 Months, 12 Months or buy in one go.
  6. The device is yours, not the school's, you keep it.
  7. The Chromebook will have software updates for 5+ years.
  8. No other costs for software will be included for the life of the Chromebook.
-



---

# Chromebooks



If you want to buy your own Chromebook you can, there are some great deals on the High-Street/online. We'll just ask you to pay a one-off fee for Safeguarding software to keep your child safe online, which is £48.

How do I buy?

The link is on the website. <https://rawmarsh.org/chromebooks>

Questions?

Email: [Chromebooks@rawmarsh.org](mailto:Chromebooks@rawmarsh.org)

---



---

# Answering your questions

## Highlighted Questions:

Parent pay/ dinner codes (students to be supplied with these during P1 on their first day) and school lunches

SEND support - for any additional information, please email [kscholfield@rawmarsh.org](mailto:kscholfield@rawmarsh.org)

---



---

# First Day - 1st July 2024

**8:40 - 9:00** Welcome introduction in the Main Hall

**9:00 - 10:35** Time in form- *Uniform and equipment check, timetables, site map, dinner codes*

**10:35 - 11:20** P2 lesson

**Early 1st break**

**12:20 - 1:10** Period 3 lesson

**Early 2nd break**

**1:55 - 3:10** Period 4 lesson

---

---

**With Me in Mind talk from 4:30 pm**

---

# WITH ME **iN** MIND



SCHOOL TRANSITION

**WITH ME *i*N MIND**

**NHS**

## School transition

Supporting your child with school transition



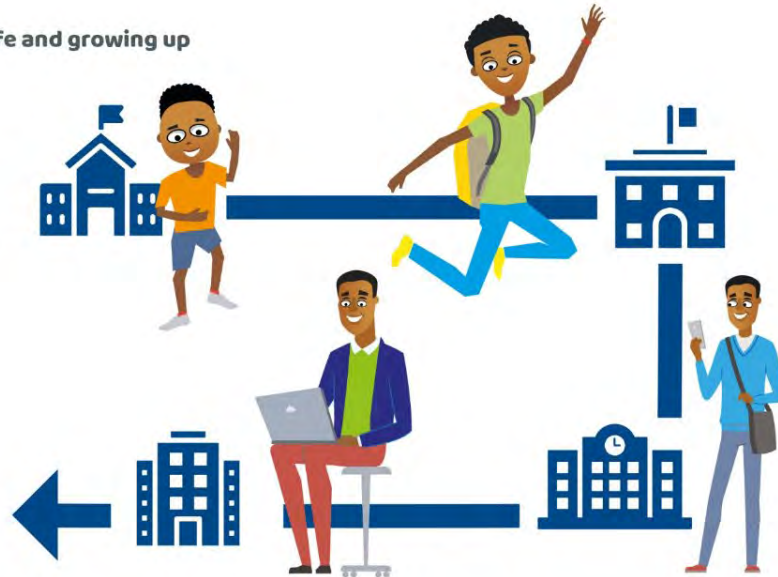
SCHOOL TRANSITION

NHS

# WITH ME IN MIND

## What is transition?

- Transition and change are a normal part of life and growing up
- There are lots of different transition points throughout the school journey
- A transition could also be moving up a year group or moving schools



SCHOOL TRANSITION

NHS

# WITH ME IN MIND

## Examples:



Moving school



Changes in the reproductive system at puberty



Marriage



Becoming a parent



Divorce



Children moving out



New job



Losing a job



Health difficulties

SCHOOL TRANSITION

NHS

# WITH ME IN MIND

**We know that the move to secondary school is an exciting time and one that also causes children to worry.**



**In small groups please discuss the things your child might worry about.**



SCHOOL TRANSITION

NHS

# WITH ME IN MIND

## Examples of what children worry about



Losing old friendships and meeting new people



New uniform



Feeling under pressure to learn new things



Moving between classroom for different lessons



Getting lost in school and on the way to school



Fitting in/ being bullied

SCHOOL TRANSITION

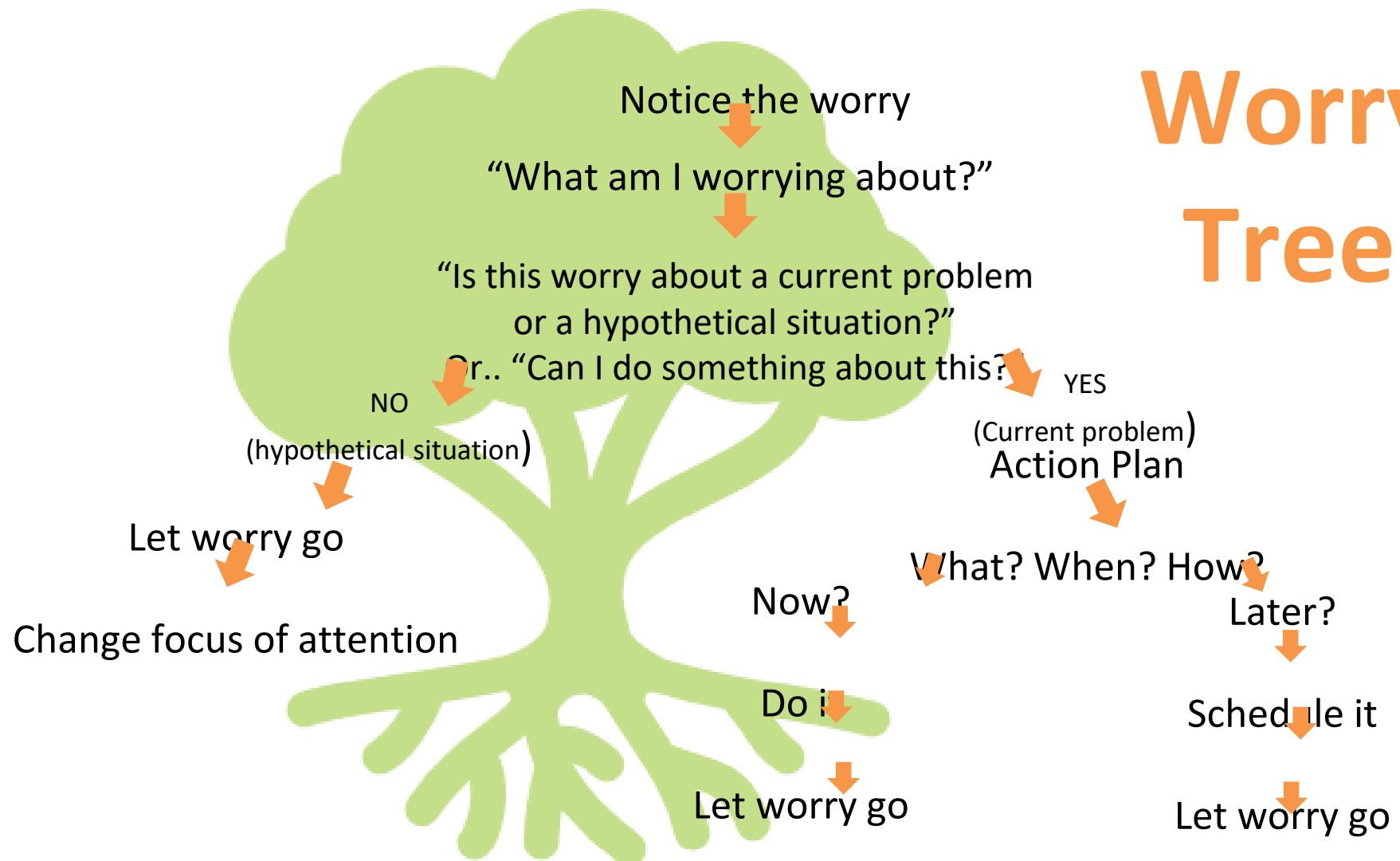
NHS

# WITH ME IN MIND

## Examples of what parents worry about

- Will my child make new friends?
- Are they going to miss their old friends?
- Buying new uniform
- Academic pressure
- Will they feel safe?
- What if they get bullied?
- Who do I contact if I am worried about them?

# Worry Tree



SCHOOL TRANSITION

# WITH ME IN MIND

NHS



[Moving Up! The transition to secondary school - YouTube](#)

SCHOOL TRANSITION

# WITH ME MIND

NHS

## How can I support my child

- Normalise that everyone experiences school transition
- Share your own experiences
- Ask your child how they are feeling
- Encourage independence
- Stay calm and be patient.

SCHOOL TRANSITION

# WITH ME IN MIND

NHS

## Practical tips

- **Get prepared-** involve your child in shopping for their PE kit, school uniform and stationary giving them choices as much as possible.
- **Visit the school**
- **Get organised-** use a planner
- **Look at the school website**
- **Practice travelling to school.**

# WITH ME **iN** MIND

## What can I say to my child?

- **Avoid** offering too much reassurance as young people will continue to rely on reassurance. Instead you could try the using some of the strategies below.

### Empathise

- 'I can see you are feeling worried, that must be really difficult'
- 'Sorry to hear you are feeling really worried about that'

### Normalise

- 'I remember when I felt worried about...'
- 'Lots of young people get worried about different things'

### Ask questions

- What is worrying you?
- What do you think will happen?
- What is it about.....that is making you worried?



SCHOOL TRANSITION

# WITH ME IN MIND

NHS

## Activities



[WMIM-Transition-leaflet-08.20.pdf \(withmeinmind.co.uk\)](#)



SCHOOL TRANSITION

# WITH ME IN MIND

NHS

## Useful websites

- With Me in Mind - [www.withmeinmind.co.uk](http://www.withmeinmind.co.uk)
- Young Minds - <https://youngminds.org.uk/find-help/for-parents/>
- Rotherhive - <https://rotherhive.co.uk/>
- BBC Bitesize- Starting secondary school - BBC Bitesize
- BBC Bitesize- Transitioning to secondary school - BBC Teach

SCHOOL TRANSITION

# WITH ME IN MIND

NHS



New **Parent Plus eClinic** app is an instant messaging drop-in clinic for parents & carers with children in the Rotherham area and professionals wanting advice around young people aged (11-18 years) to talk to a CAMHS or With Me in Mind Practitioner via their mobile device. The app can be downloaded via android or IOS, register your details and book an appointment via the app. The appointment is held via a text message-



Our **CAMHS eClinic** app is a free instant messaging service which enables young people (11-18 years) to self-refer and talk to a CAMHS Practitioner via their mobile device. Young people can download the app via android or IOS, register their details and book an appointment via the app. The appointment is held via a text message-based service.